

# Ayehu NG Single Tenant Installation Guide

## Version 1.9

March 2021

Copyright © Ayehu Software Technologies LTD. 2021

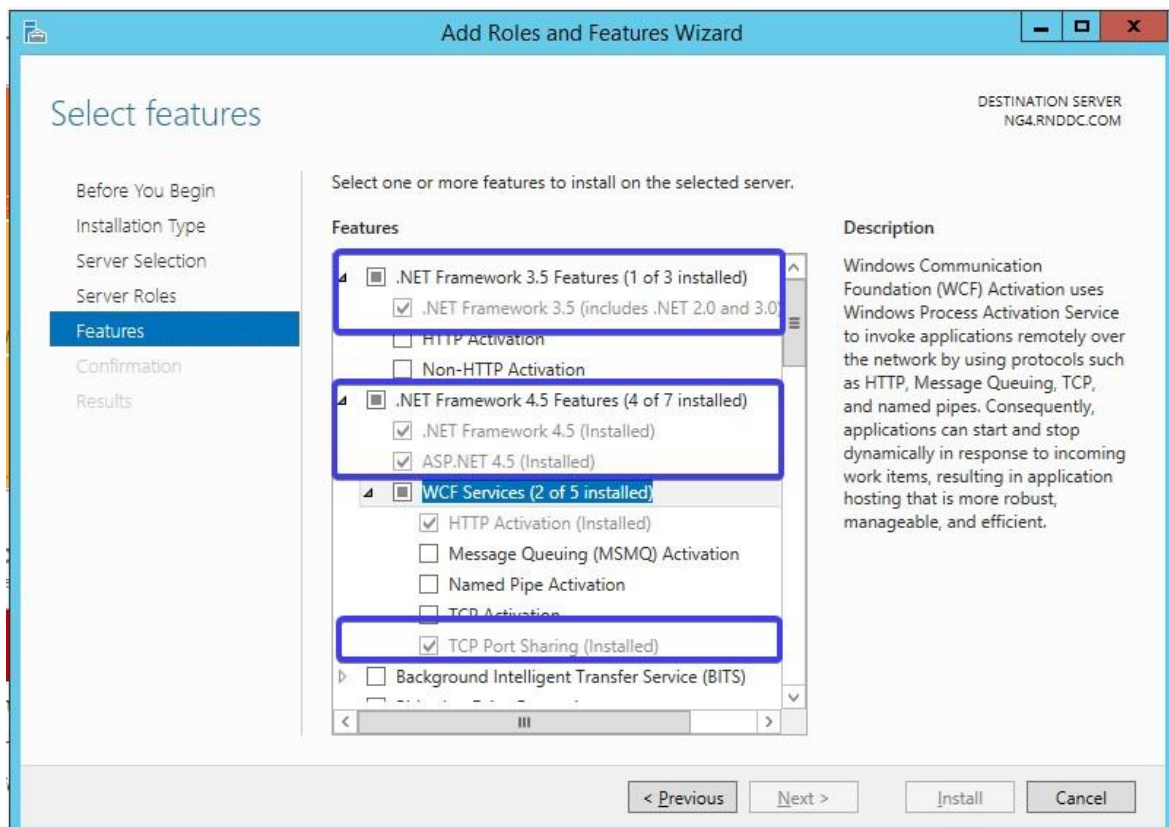
# Table of Contents

- 1. PRE-INSTALLATION REQUIREMENTS .....1
- 2. INSTALLATION PROCEDURE .....4
- 3. POST-INSTALLATION PROCEDURE.....13
- 4. FIRST TIME LOGIN .....14

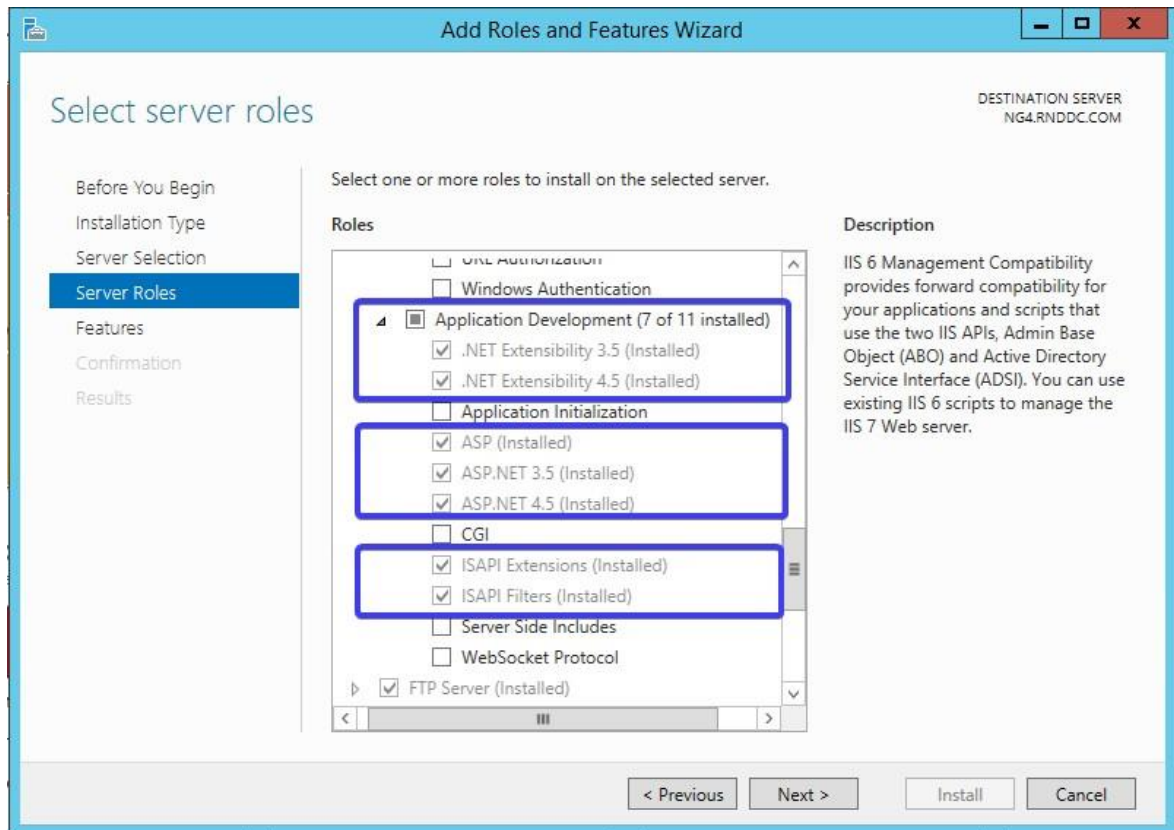
## 1. PRE-INSTALLATION REQUIREMENTS

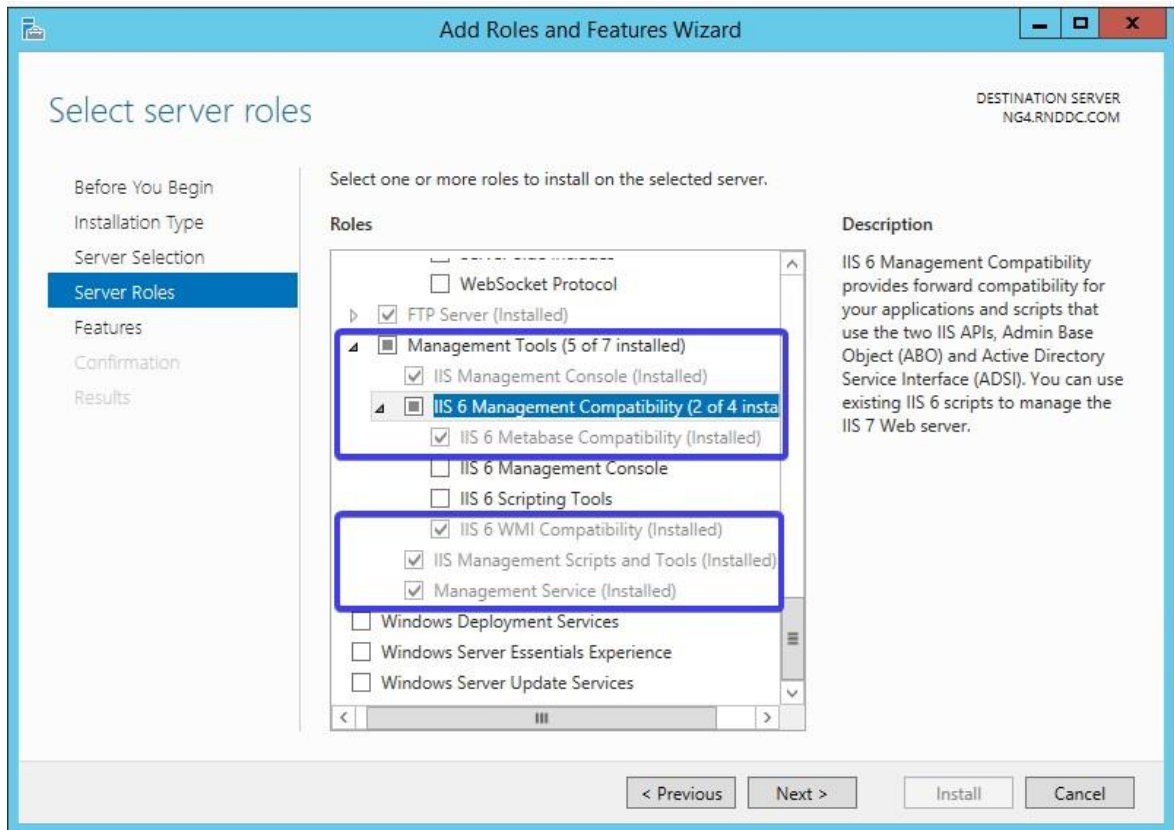
Before installing Ayehu Next Generation, check the following:

1. Port 1433 is open between the Ayehu Next Generation server, engine, comm server and the Ayehu Next Generation database server.
2. If you are installing Ayehu Next Generation on a remote server, open port 1433 to the database server, and port 11000 to the Ayehu Next Generation server.
3. You are installing Ayehu Next Generation on a 64-bit Windows Server. The following features must be enabled.



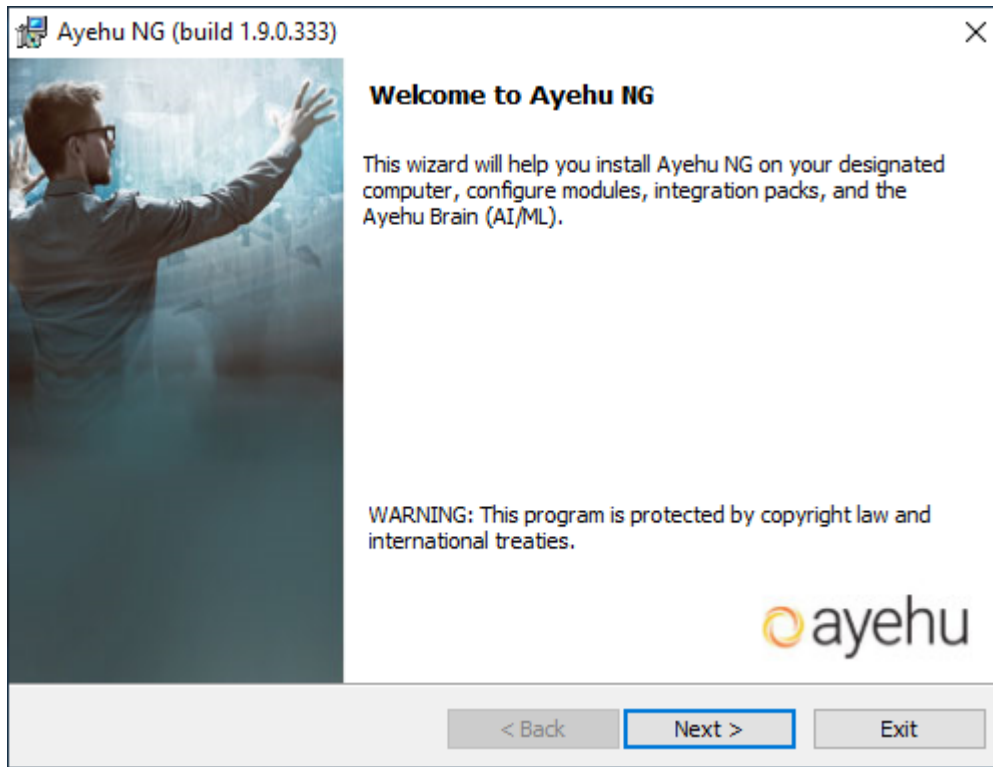
- To install the Web component, install the web Server roles (IIS) on the designated server prior to the Ayehu Next Generation installation from **Server Manager > Server Roles**, as depicted below:





## 2. INSTALLATION PROCEDURE

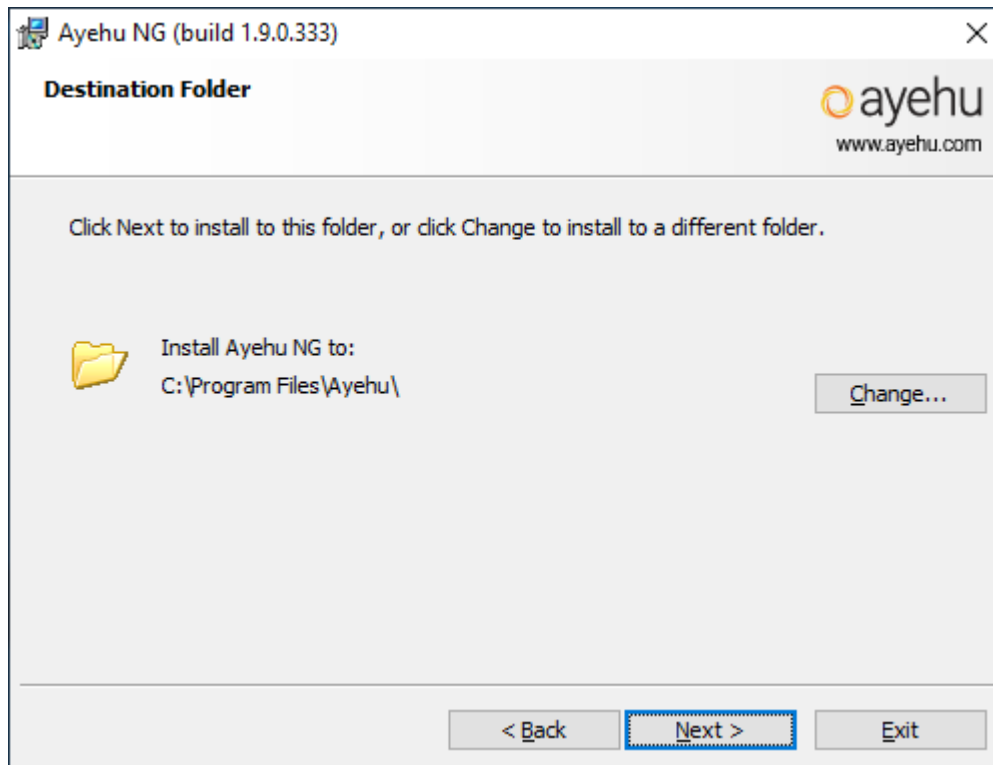
1. Execute the installation file, **Ayehu NG.exe** as an administrator. On the welcome page click **Next**.



2. Read Ayehu's License Agreement, select **I accept the terms in the license agreement** and click **Next**.

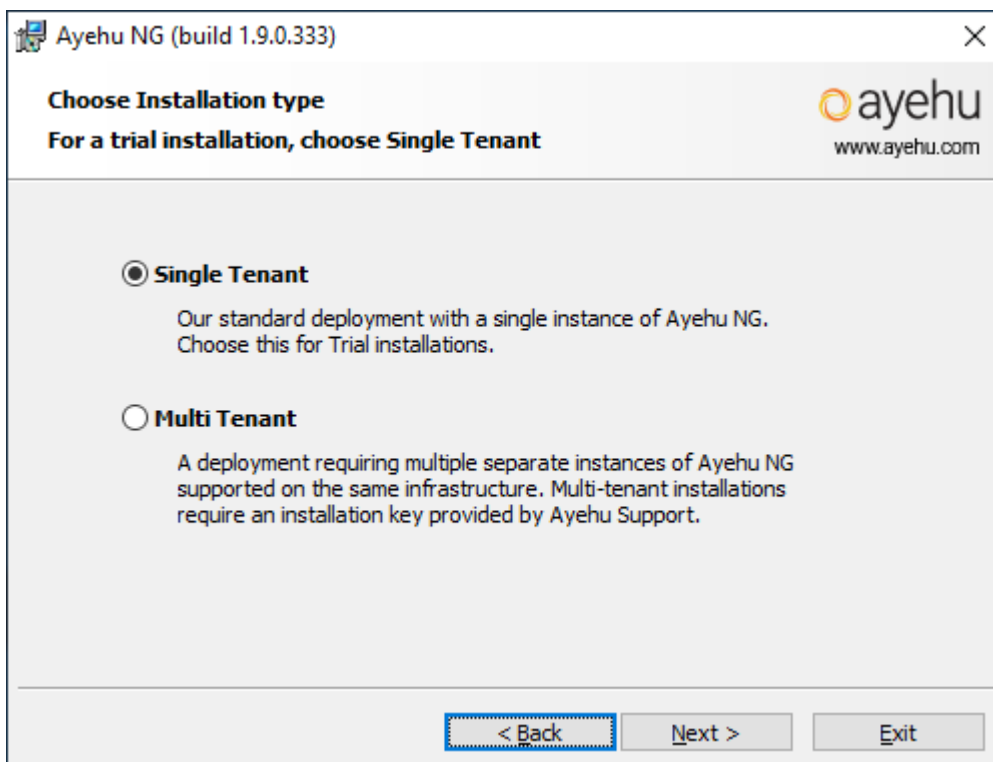


3. Select the installation path and click **Next**.



4. Choose the **installation type** you wish to install. For a standard deployment or a trial environment, select **Single Tenant**.

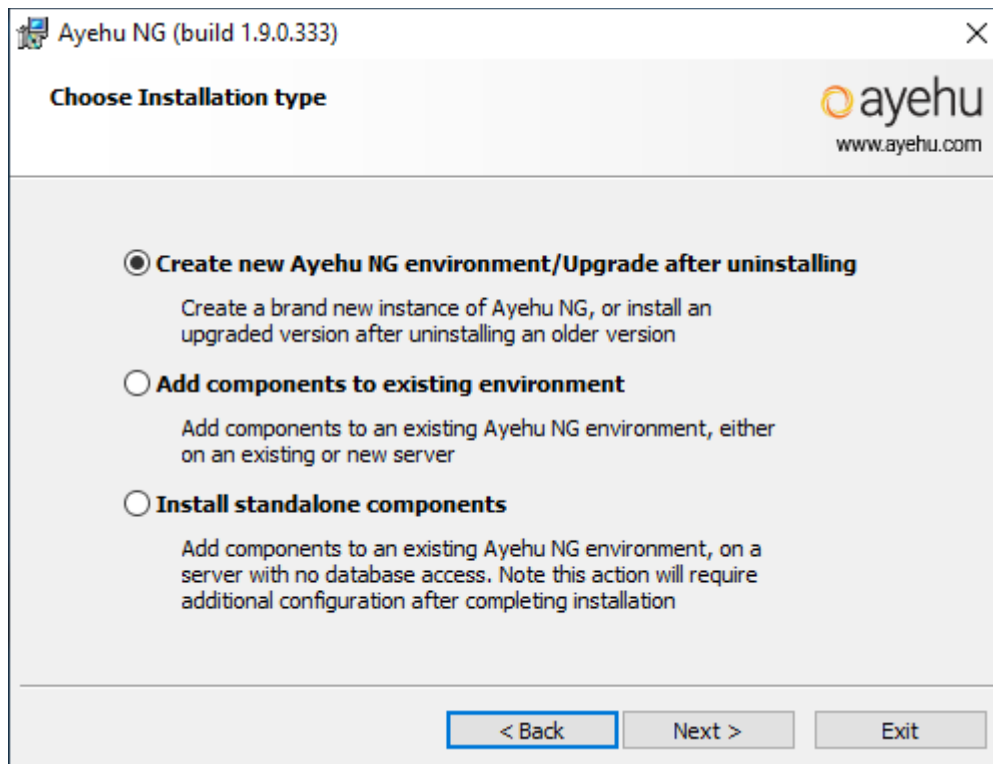
For multi-tenant installations select **Multi-Tenant**. Multi-tenant installations require an installation key that can be provided by Ayehu Support.



5. Select **Create a new Ayehu NG environment** if this is a first-time installation.

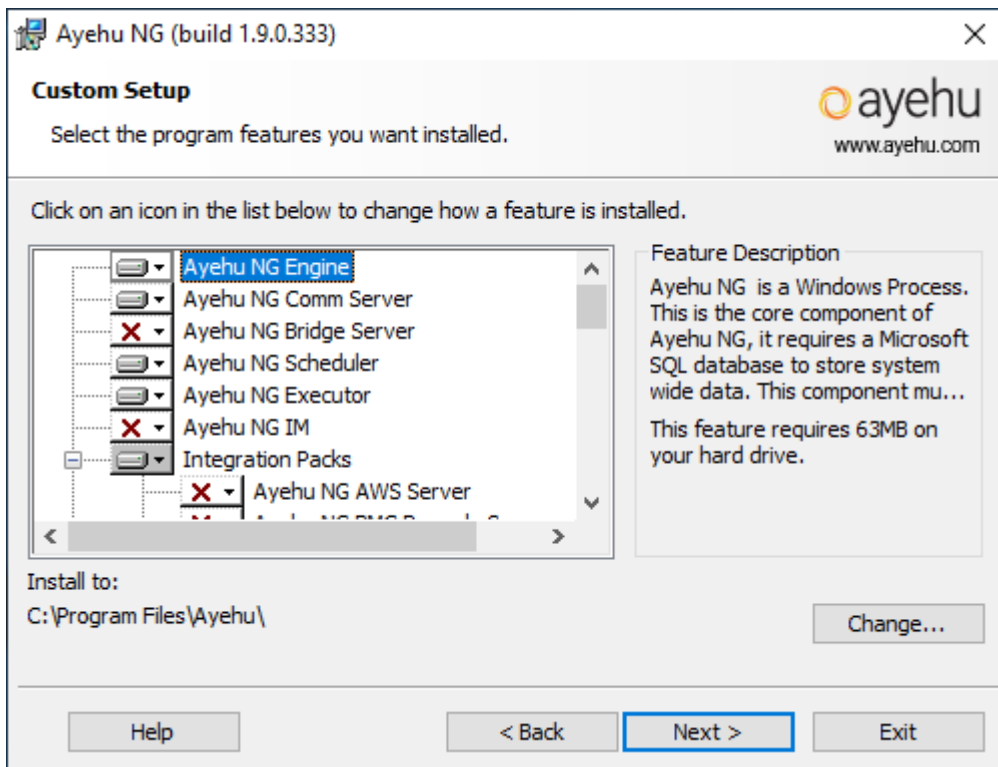
Or select **Add components to existing environment** if you wish to add modules to an existing Ayehu NG environment

Or select **Install standalone components** if you wish to install a module on a server that does not have DB connectivity (such as a DMZ). Additional configurations will be required after installation to complete this setup.





6. Select which components you would like to install from the **Component Selection** tree.



Some components are selected by default. Any component selected by default will be automatically installed in your Ayehu NG environment at the end of the installation process. The **Ayehu NG Brain** integration will be automatically installed **and** configured. If this is not your desired result, you can de-select any integration by clicking on the arrow next to it and then selecting **this feature will not be available** option.

## 7. Configure database connectivity:

If you do not have a database server, select **I don't have a database server** and the installation will also install an SQL Express database server.

If you have a database server, select **I already have a Microsoft SQL server** and configure the server name and authentication method as follows:

Ayehu NG (build 1.9.0.333)

**Create Ayehu Database**  
Select database server and authentication method

ayehu  
www.ayehu.com

I don't have a database server, install Microsoft SQL Express 2012 SP4 on this machine  
 I already have a Microsoft SQL server 2012 SP1 - 2019

Database server that you are installing to:  
[Empty text box]

DB Name: Ayehu

Connect using:  
 Windows authentication credentials of current user  
 Server authentication using the Login ID and password below

Login ID: [Empty text box]  
Password: [Empty text box]

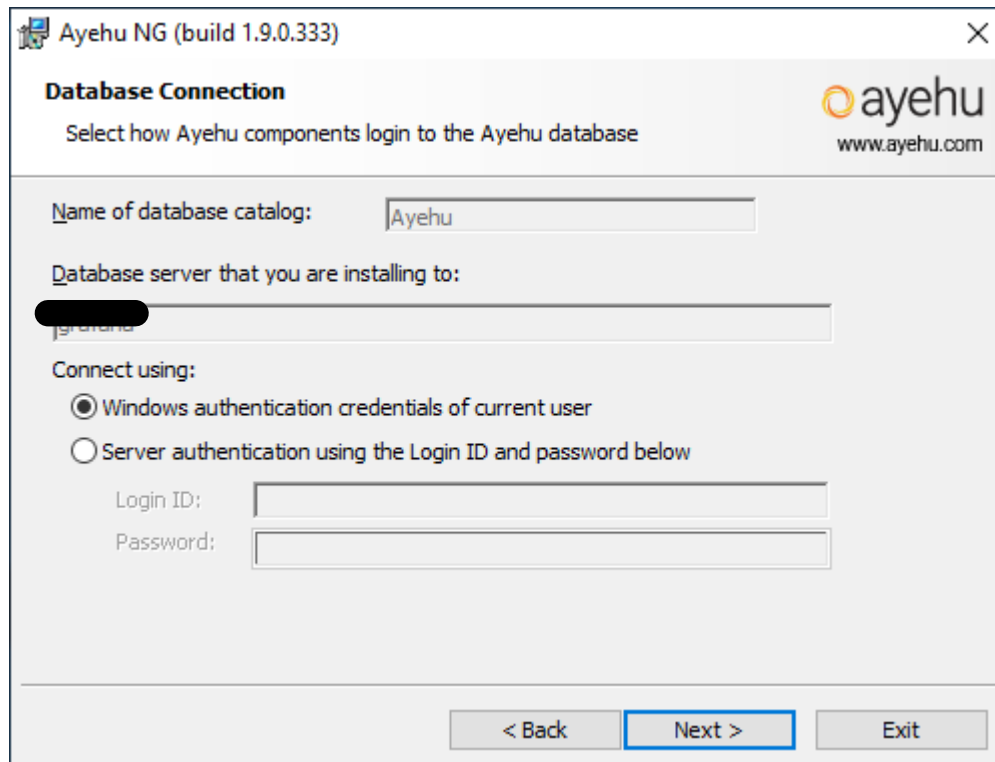
< Back    Next >    Exit

Use the full name or the IP address of the server where the database is located. Use the same name in every other Ayehu installation (for example, when installing a remote engine). Never use (local) or Localhost\Instance Name.

When defining a server name, it should be in the form of: Servername\Instance. When defining specific ports, it should be in the form of: Servername\Instance,PortNumber

- For a first time installation, the provided user must have Sysadmin role on the data base server, or must be a custom user set up with the permissions defined [here](#). This role can be revoked after the installation is completed; however, the user must maintain a DB Owner role.

You can change the credentials that are used to communicate between the components and the server.



The screenshot shows a Windows-style dialog box titled "Ayehu NG (build 1.9.0.333)". The main heading is "Database Connection" with the instruction "Select how Ayehu components login to the Ayehu database". The Ayehu logo and website URL "www.ayehu.com" are in the top right. The form contains the following fields and options:

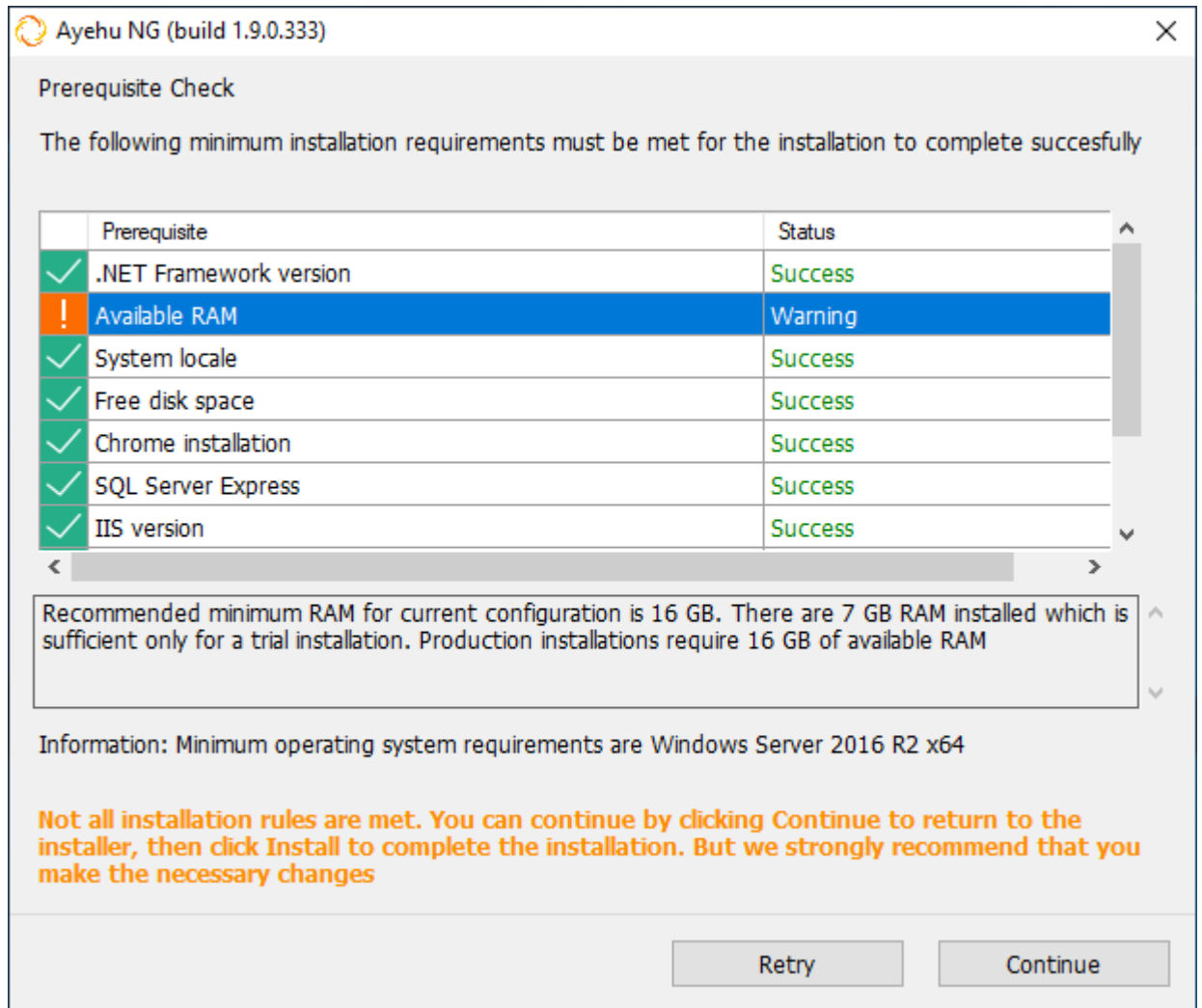
- "Name of database catalog:" with a text box containing "Ayehu".
- "Database server that you are installing to:" with a text box containing a redacted server name.
- "Connect using:" section with two radio buttons:
  - Windows authentication credentials of current user
  - Server authentication using the Login ID and password below
- "Login ID:" and "Password:" text boxes, both currently empty.
- Navigation buttons at the bottom: "< Back", "Next >" (highlighted with a blue border), and "Exit".

Do not cancel the SQL Setup, as it will terminate installation.

If you selected to use Windows Authentication method, follow the instructions in the [Post Installation](#) section.

Click **Next** to continue.

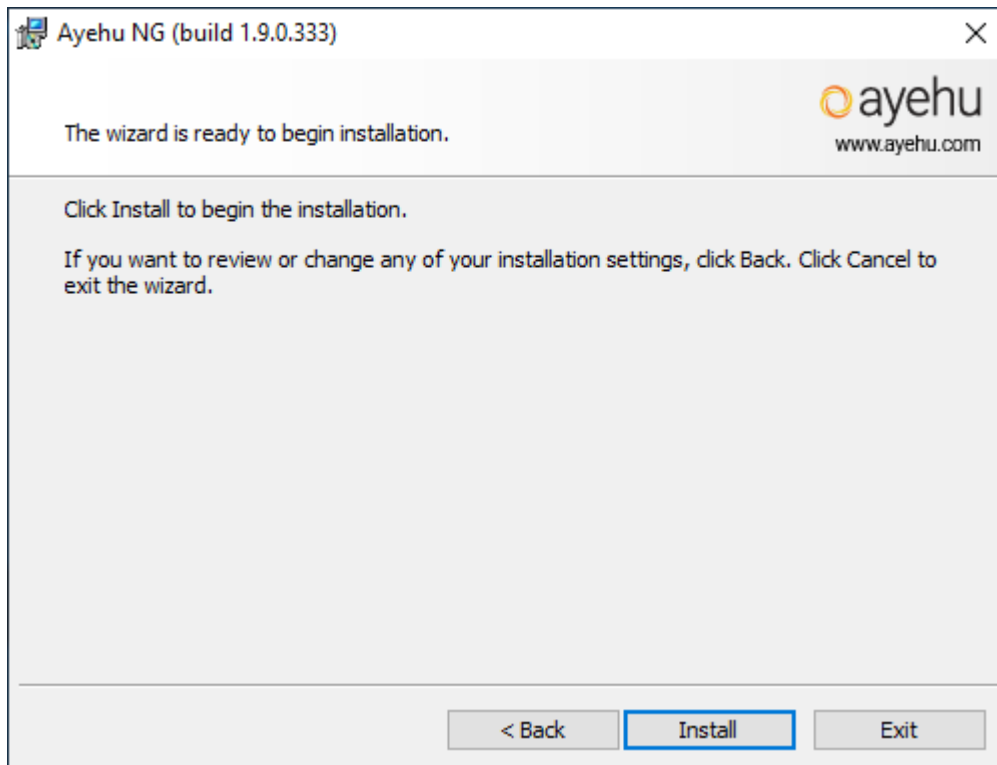
- The next screen presented will be the **pre-requisites check** screen. This process will review all parameters needed for your installation and verify that everything is properly configured for you to install and run Ayehu NG.



There are some pre-requisites - such as available RAM - which will be presented as a warning that can be bypassed.

For some changes - such as modifying IIS features - it is possible to make the necessary changes and then click **Retry** to run the pre-requisites scan again and get updated results. For issues that cannot be bypassed - such as insufficient version of SQL server, you will have to **Close** the pre-req screen, make the necessary changes, and then try again. If all conditions have been met, click on **Continue** to go to the next step.

10. Click on **Install** to start the installation.



11. Once the installation is complete, the **Finish** screen will be presented.



Here you will see two checkboxes selected by default. One to **Launch Ayehu NG**, which will open your Chrome browser to your Ayehu NG environment URL. The other is to **Create desktop shortcut** which will place a shortcut to the Ayehu NG tenant (in a single tenant install) or to the Ayehu NG Master (in a multi-tenant install)



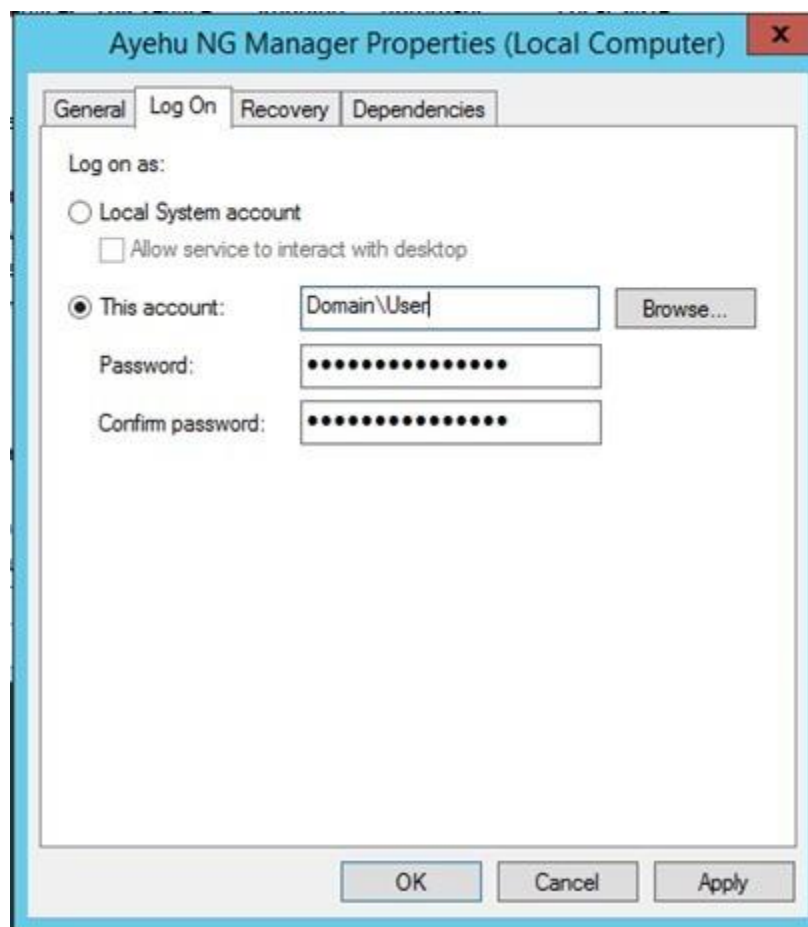
Note, if you are getting error using the shortcut, update the chrome path.

12. Installation is now complete. Please make sure to reference the [Post Installation procedure](#) as well as the [First Time Login](#) sections for more important information.

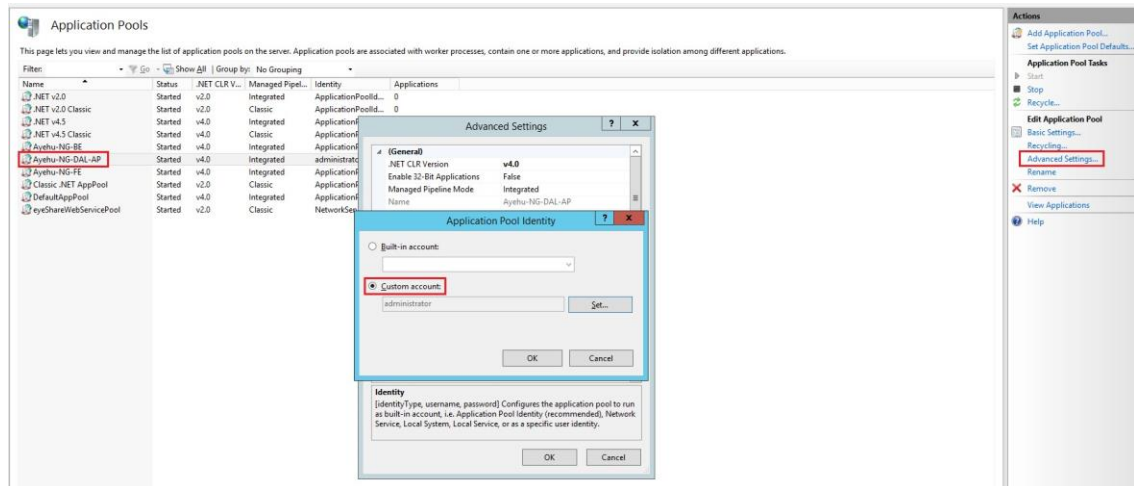
### 3. POST INSTALLATION PROCEDURE

**After complementing the Installation procedure:**

- I. If you selected the **Windows Authentication** method in the database configuration window during the installation:
  - a. For the **Logon Account** of the **Ayehu NG Manager** service, select an account that has **DB Owner** privileges to Ayehu Next Generation and on the Ayehu Next Generation Master databases. To edit the Logon Account for both services, open the Service Management console on the Ayehu Next Generation server, right click each service and select **Properties**. Edit the account in the **Log On** tab and restart the service.



- b. Set the Identity of the **Ayehu-NG-DAL-AP** application pool to an account that has DB Owner privilege on the Ayehu Next Generation and Ayehu Next Generation Master databases: open **IIS > Application Pools** and select **Ayehu-NG-DAL-AP**. Select **Advanced Settings** click **Identity** and Select **Custom**.



## 4. FIRST TIME LOGIN

Before proceeding with the super admin registration process, if you selected **windows authentication** during the installation process please refer to the **post installation requirement** section for critical information.

To log into your Ayehu Next Generation tenant for the first time, follow the following steps:

1. Open a Chrome browser, the latest Chrome version is recommended.
2. Navigate to the URL where your instance resides. The URL will be `https://<Ayehu NG Server>:8442`
3. If you receive a certificate error, click Advanced and then click on Proceed to <URL> (unsafe)

Upon initial entry to the page, if this is a first-time installation and no admin user has previously been created, you will see the **Super Admin Registration Page**. This process will create a super admin user that will have access to every aspect of the system, please ensure to use proper credentials here.

Enter all details of the desired user here. Note that all fields are required, as is a certain password complexity that is explained in the form. The "Automatically register to receive a trial license" is checked by default and should be used if you are starting a trial of Ayehu NG. Note that an internet connection is required if you wish to proceed with this checkbox selected. If you wish to use Ayehu NG in a production environment, uncheck this box and submit a license request in our Support Portal after you log into your instance.

Once this user is created, they will become the **initial super admin** user in the system. Click **Next** when all details are filled in (CAPTCHA checkbox must be checked if the "Automatically register to receive a trial license" checkbox is selected).

If you choose to proceed with the "Automatically register to receive a trial license" checkbox selected, you will be asked to activate your license by entering the activation code that will be sent to your email. Once you do so, the Ayehu NG Login page will be presented. If you choose to proceed with the checkbox unselected, the Ayehu NG Login page will be promptly presented. Enter the credentials of the user that was created in the previous step.



**Welcome to Ayehu NG**  
**Let's get started!**

Please define the details for the Super Admin account, this account will have full system access.

Password must be between 8-32 characters and include at least one upper case letter and one number or special character.

All fields are mandatory.

**User Name** Administrator

**Password** .....

**Confirm Password** .....

**First Name** Jane

**Last Name** Doe

**Email** jdoe@acme.com

**Phone Number** +1-541-754-3010

**Company** Acme

Automatically register to receive a trial license

I'm not a robot

reCAPTCHA  
Privacy - Terms

Next

ayehu

\*

\*

\*

Login

© Copyright - Ayehu Software Technologies, Ltd. | 2020

Click **Login** to log into your Ayehu NG instance.

If you have unselected "Automatically register to receive a trial license" then You will be directed to the product license page, where you can copy the product key and submit a license request to our Support portal. For instructions on how to do this, see [this Support article](#).